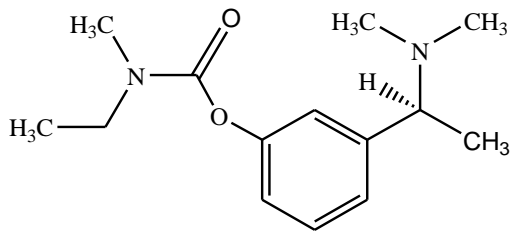




Rivastigmine Transdermal Patch
Lisidiming Touptieji

S -N- -N- -3-[1-()]-



C₁₄H₂₂N₂O₂

250.34

[(2-) ,]
/ /

4.6mg/24

1 4.6mg/24

2 9.5mg/24

- 50kg

-

			4.6mg/24	9.5mg/24	13.3mg/24	
17.4mg/24				13.3mg/24	17.4mg/24	
						1
	9.5mg/24					
/					/	
			17.4mg/24	*		
				9.5mg/24		
2						
		1 2				
(10%)	(1%~10%	1%)	(0.1%~1%	0.1%)	(0.01%~0.1%	
0.01%)	(<0.01%)					
1						

* 13.3mg/24

* 17.4mg/24

** 24 " "

*** 24 " "

/

	18 6.2	57 18.8	50 17.0	10 3.3	75 12.6
	18 6.2	31 10.2	16 5.4	10 3.3	49 8.2
	8 2.7	23 7.6	16 5.4	4 1.3	31 5.2
	7 2.4	21 6.9	22 7.5	7 2.3	28 4.7
	2 0.7	15 5.0	12 4.1	3 1.0	17 2.9
	10 3.4	13 4.3	18 6.1		

2.2%

3.7%

-

- /
-

3

4.6mg/24

/

/

QT /

•

/

/

/

88% 65

55% 75

/

P450

/

/

/

/

/

-

/

-

n=75

549

12mg/

/

/

23%

/

/

/

/

/

24

48

24

10-20

24

ADAS-Cog
ADCS-CGIC

ADCS-ADL

3

24

4

4

3

24

ITT-LOCF	9.5mg/24 N=251	12mg/ N=256	N=282
ADAS-Cog ± 24 ±	n=248 27.0±10.3 -0.6±6.4 0.005* ¹	n=253 27.9±9.4 -0.6±6.2 0.003* ¹	n=281 28.6±9.9 1.0±6.8
ADCS-CGIC ± p	n=248 3.9±1.20 0.010* ²	n=253 3.9±1.25 0.009* ²	n=278 4.2±1.26
ADCS-ADL ± 24 ± p	n=247 50.1±16.3 -0.1±9.1 0.013* ¹	n=254 49.3±15.8 -0.5±9.5 0.039* ¹	n=281 49.2±16.0 -2.3±9.4

* p 0.05
ITT
1 LOCF

ADAS-Cog

ADCS-ADL

2 CMH van Elteren ADCS-CGIC <4

24

5

ADAS-Cog

4

ADCS-CGIC

ADCS-ADL

	9.5mg/24	12mg/	
ITT-LOCF	N=242	N=248	N=248
ADAS-Cog 4 ADCS-CGI ADCS-ADL	17.4		10.5
p	0.037*	0.004*	

* p<0.05

9.5mg/24

12mg/

9.5mg/24

48

MMSE

10-24

24-48

9.5mg/24

13.3mg/24

9.5mg/24

48

MMSE

2

3

ADAS-Cog

ADCS-IADL

-

-

2

48

6

6

ADAS-Cog

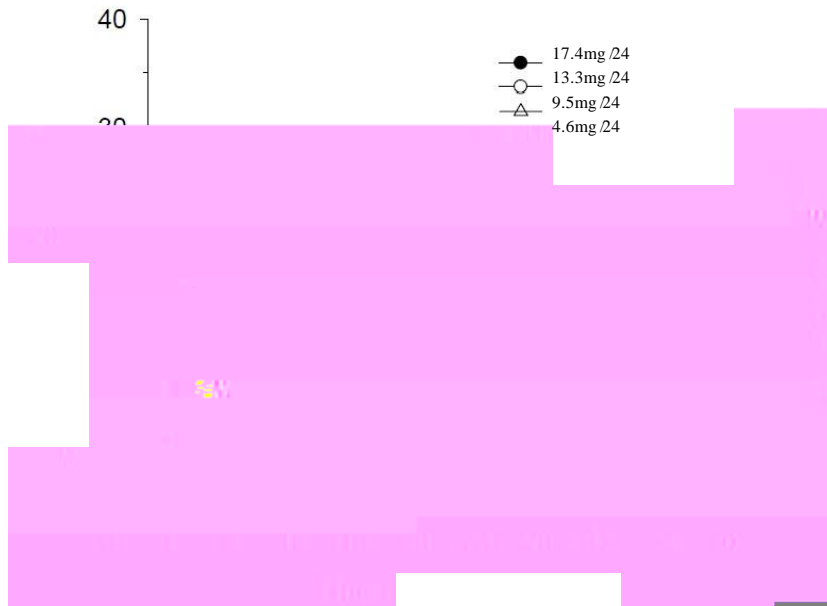
ADCS-IADL

	(13.3mg/24h) N = 265	(9.5mg/24h) N = 271	-	(13.3mg/24h) (9.5mg/24h)
			DLSM	95% CI
				P

	(13.3mg/24h) N = 265	(9.5mg/24h) N = 271	-	(13.3mg/24h) (9.5mg/24h)
--	-------------------------	------------------------	---	-----------------------------

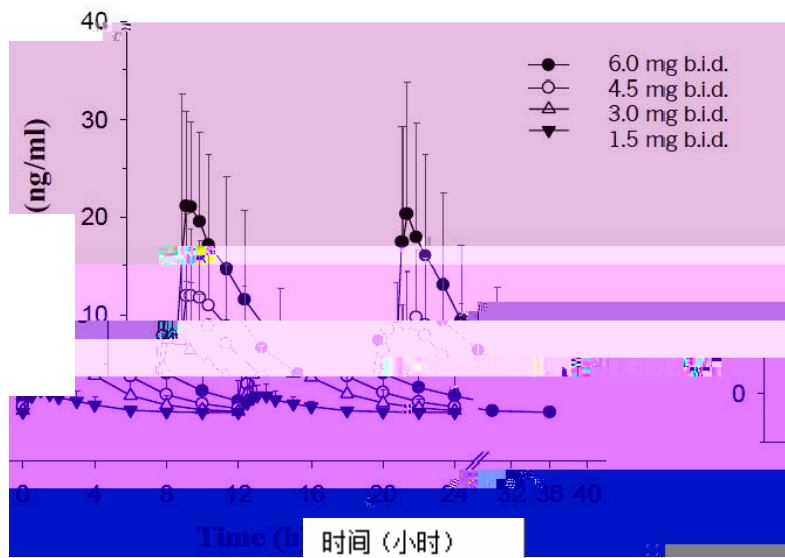
-48

1 24



2

2 / /



/

/ kg 43% C_{max} 49% AUC_{0-24h}
74% 103%

45% C_{max} 43% AUC_{0-24h}
71% 73%

NAP-226-90

65kg
100kg

35kg

2

			C_{\max}	60%	AUC	2
	3mg	6mg	/			
	n=7, Child-Pugh	5-6	n=3, Child-Pugh	7-9		n=10,
		n=10	60-65%			

7 / 30 /

36

JX20200001

Luye Pharma AG

Am Windfeld 35, 83714 Miesbach, Germany

Luye Pharma AG

Am Windfeld 35, 83714 Miesbach, Germany

15

15

264670

0535-6717618

0535-6717718

www.luye.cn

?

<

<

< 1

<

<

<

<

<

< 24

<

14

<

<

<

2

<

3

<

<

1

1

?

A

<

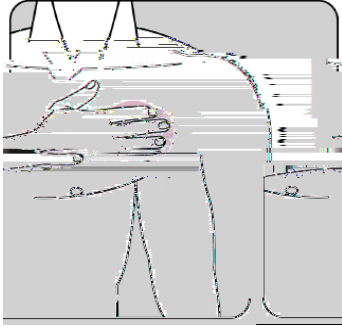
<

<

<

A





6

<

<

<

<
